

# MORPHEUS

*Sierra Grant*



*Indian Heritage History Museum & Boat Workshop*

---

The three canopy projects served as structural process studies that eventually led to the creation of Morpheus. This design of the Repetition Canopy was derived from an altered cross section of a viking ship hull. The result was a repeating canopy structure that consisted of liner and angled members which helped create a strong structural system and a captivating facade.

The goal of the Syncopation Canopy was to create a roof form that jumped back and forth in an “A, B, A, B” pattern which formed three pathways throughout the structure. Through the use of thicker structural columns and thinner tension cables this design helped influence the way structural support was crafted in the final project.

The final canopy, the progressive structure is the most complex. It begins with a simple “V” shaped cross section of a viking ship hull and gradually morphes, causing the structure to fold in on itself. This created a multiplicity of spatial types throughout the space, as the ‘wall’ slowly becomes the ‘roof’. The concept of ‘progression’ transfers into the final project and becomes the main idea for Morpheus’ roof structure.

03 Part 1.1  
*Repetition Canopy*

04 Part 1.2  
*Syncopation Canopy*

05 Part 1.3  
*Progression Canopy*

06 Part 2.0  
*Morpheus*

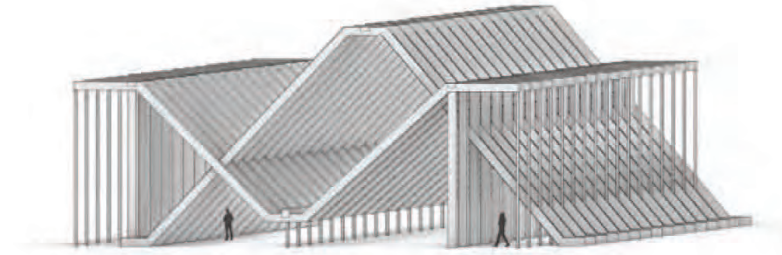
Model Photo



Model Photo

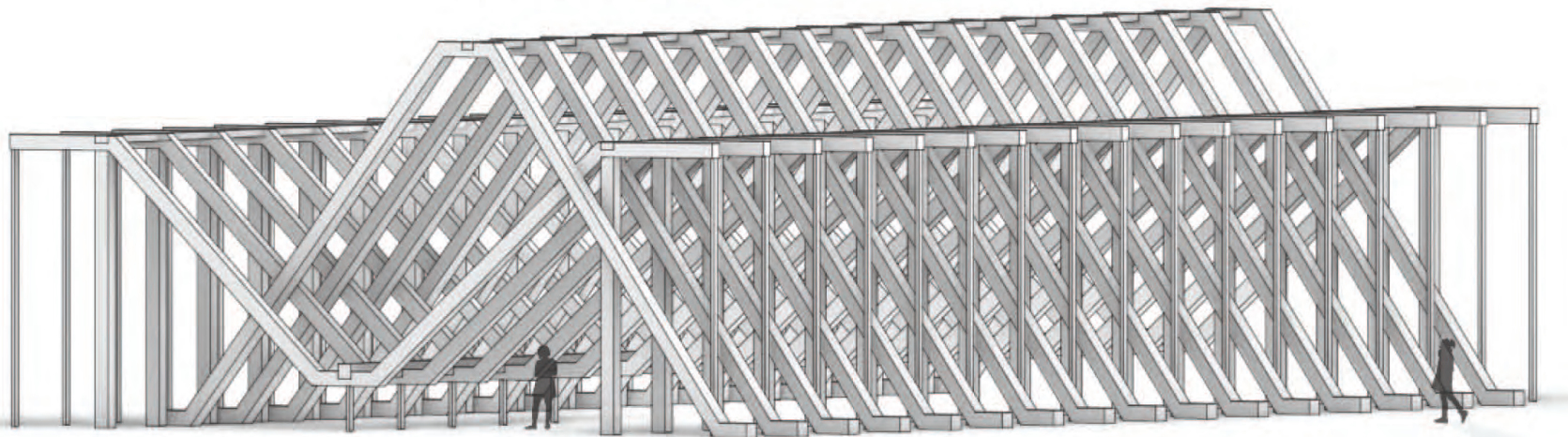
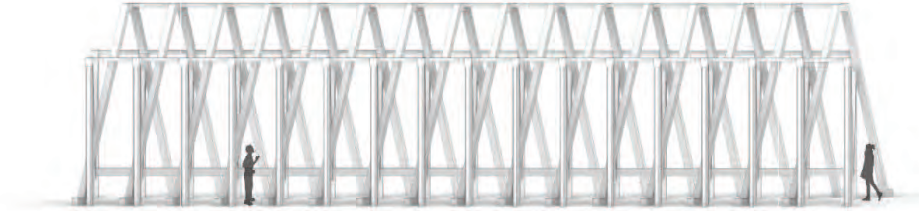


Perspective Render

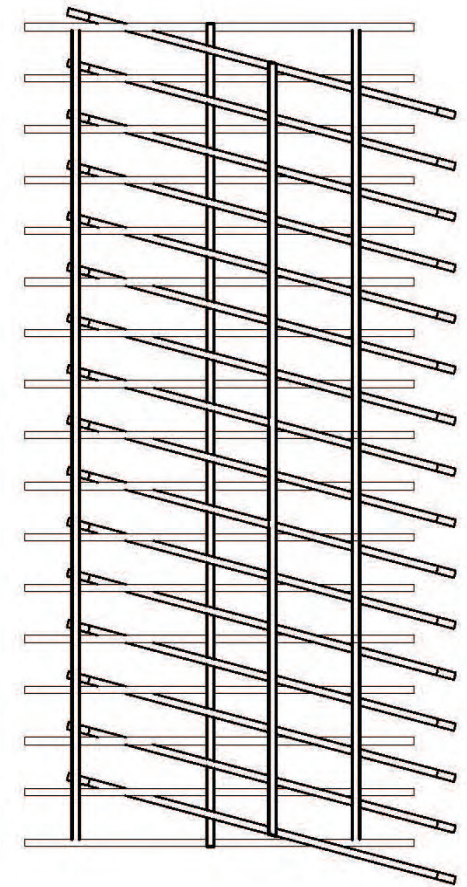


Part 1.1  
*Repetition Canopy*

Elevation



Perspective Render



Plan  
0FT 3FT 10FT

Model Photo



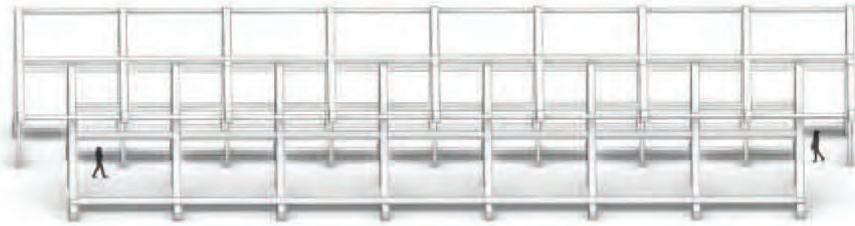
Model Photo



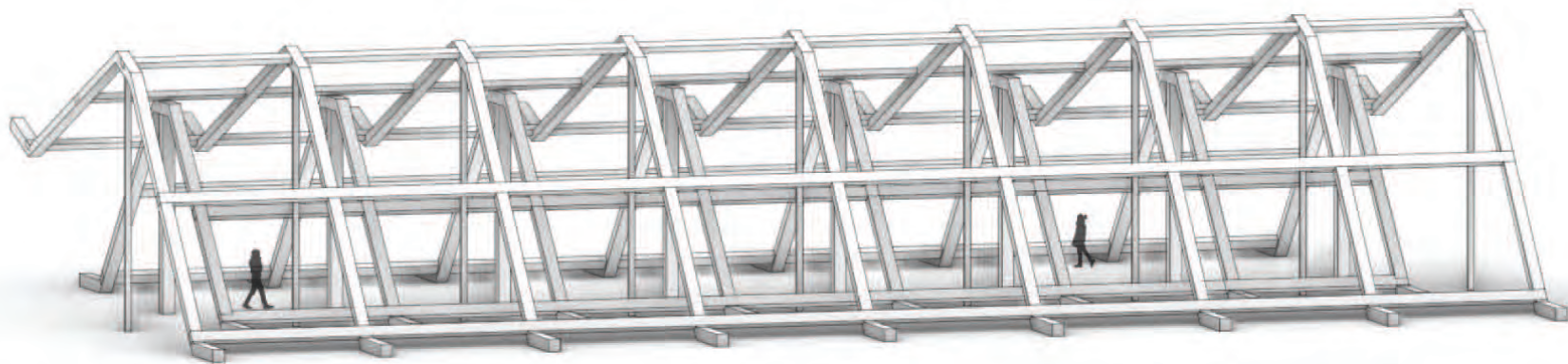
Perspective Render



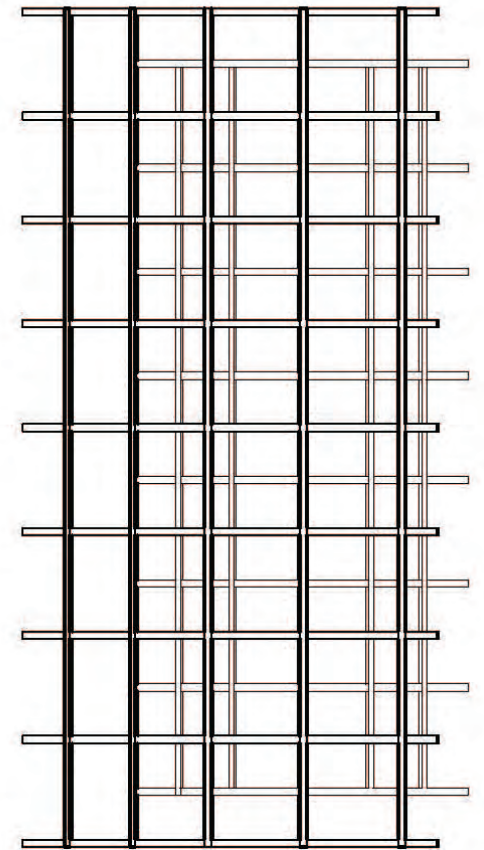
Part 1.2  
*Syncopation Canopy*



Elevation



Perspective Render



Plan  
0FT 5FT 10FT

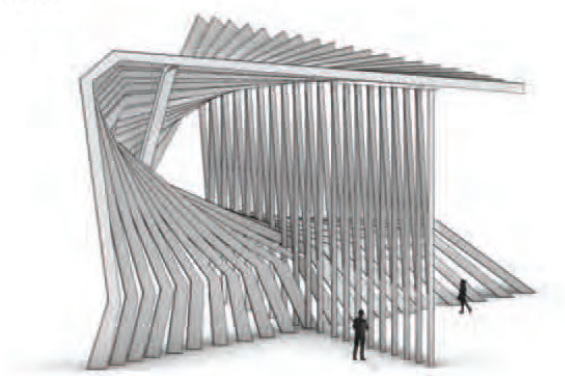


Model Photo



Model Photo

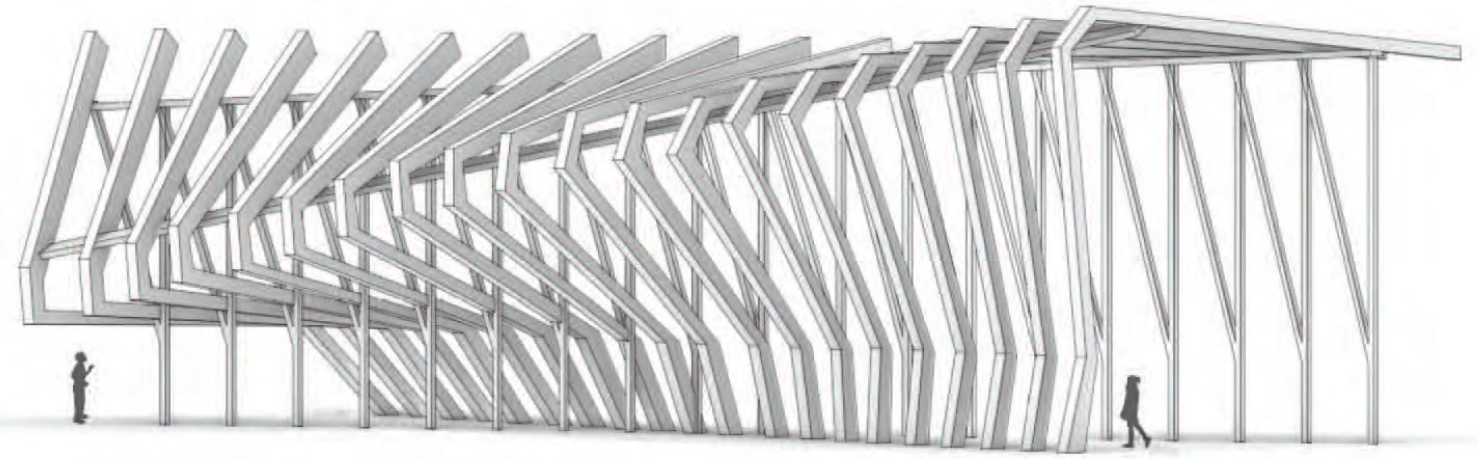
Perspective Render



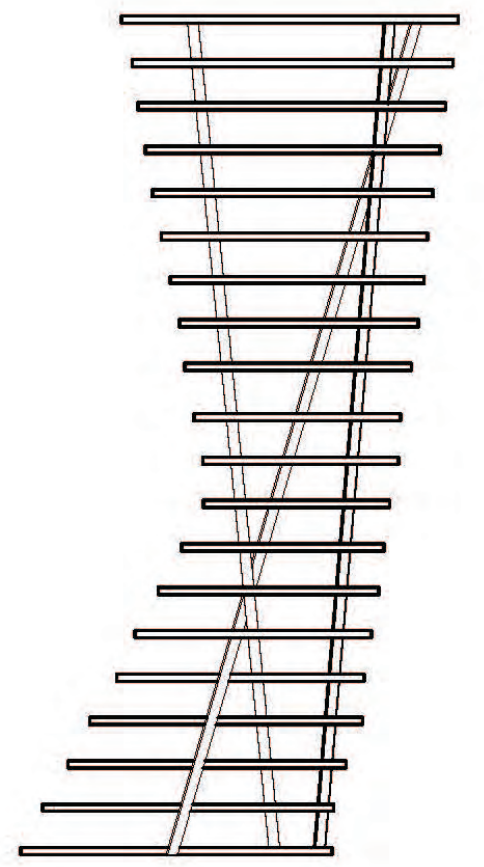
Part 1.3  
**Progression Canopy**



Elevation



Perspective Render



Plan  
0FT 5FT 10FT

# MORPHEUS

**Morpheus** is a combination of a Boat Workshop and History Museum. The Museum is based off of Pacific Northwest Indian heritage - whose people settled at the mouths of rivers and peninsulas prior to settler influence.

With a progressive roof structure, this composition has compelling interior spatial types that compress and expand as you move throughout the space.

*Perspective Render*



*Perspective Render*



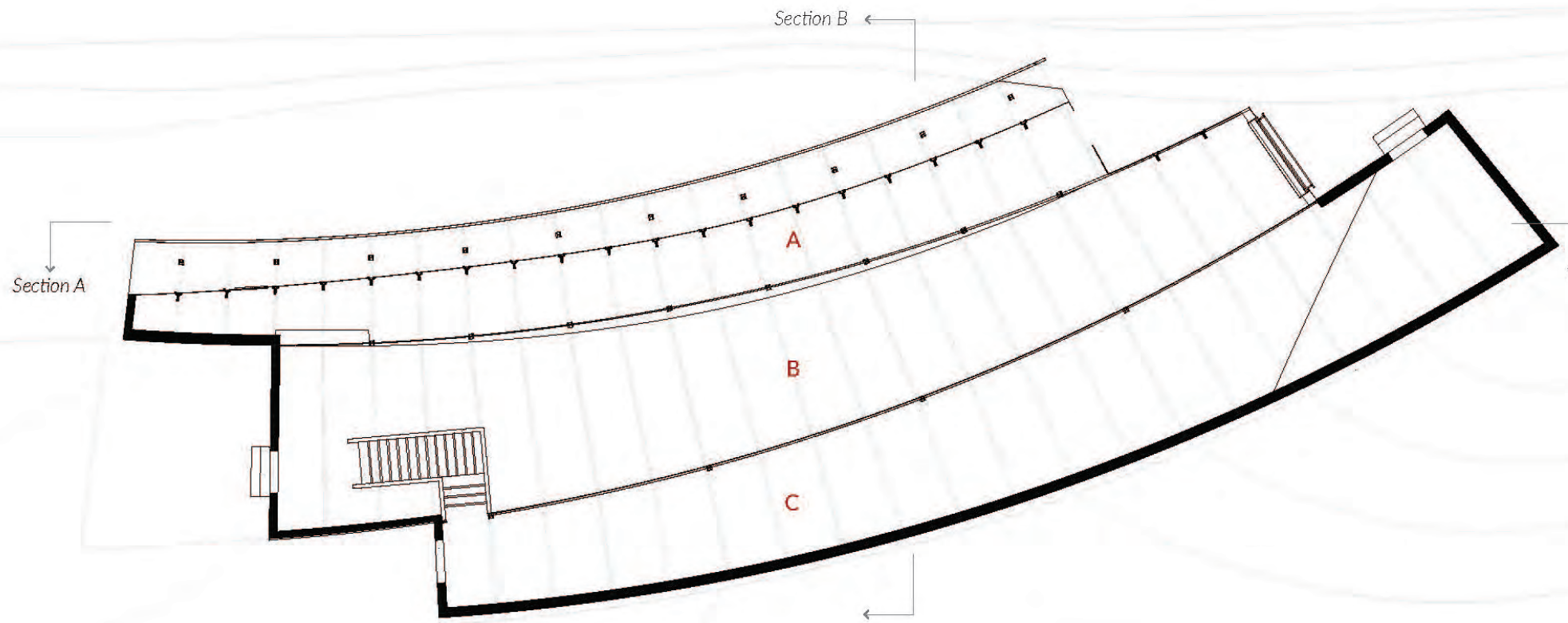
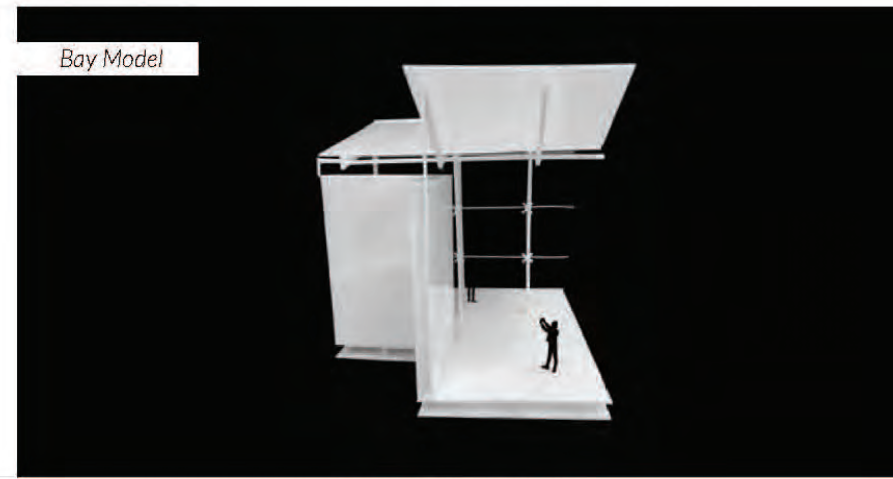
Massing Model



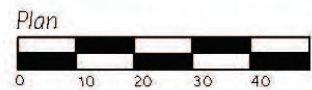
Skelton Model

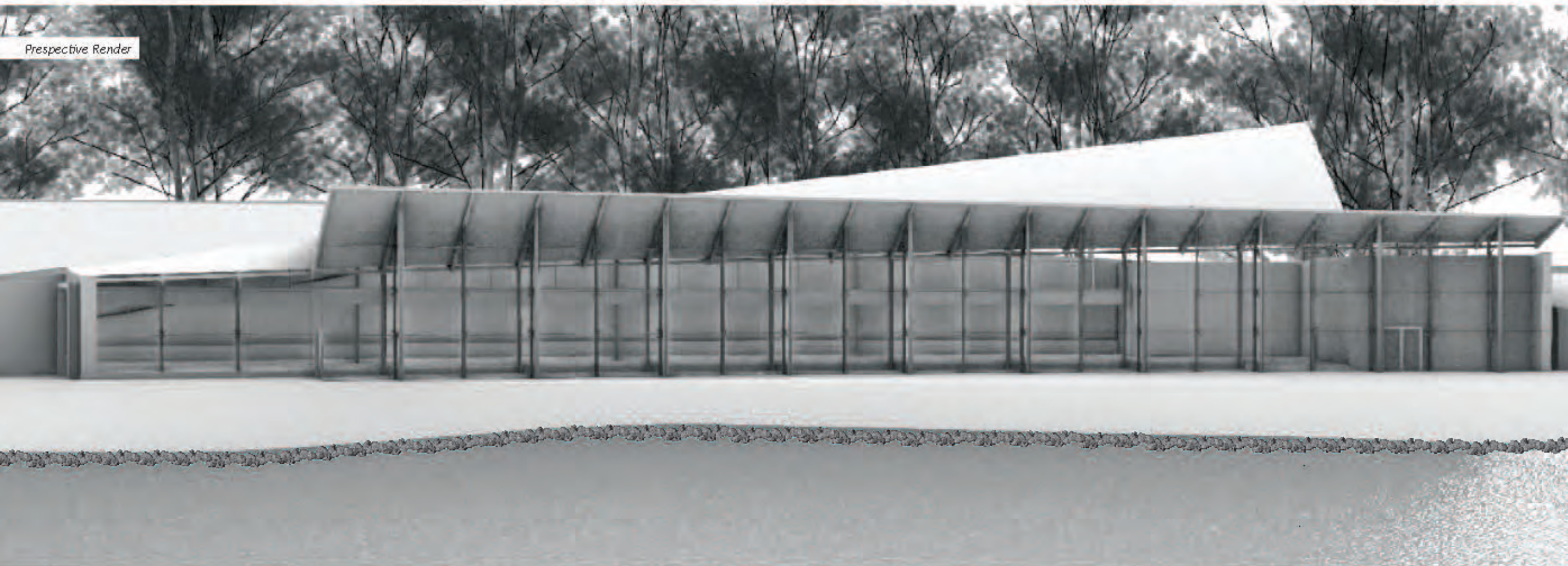
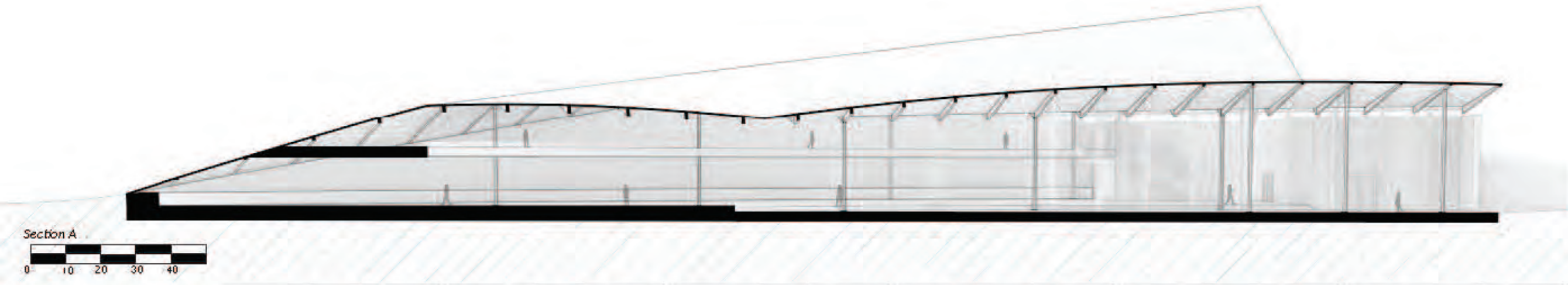


Bay Model



- A History Museum
- B Boat Workshop
- C Administration, Classrooms, & Restrooms

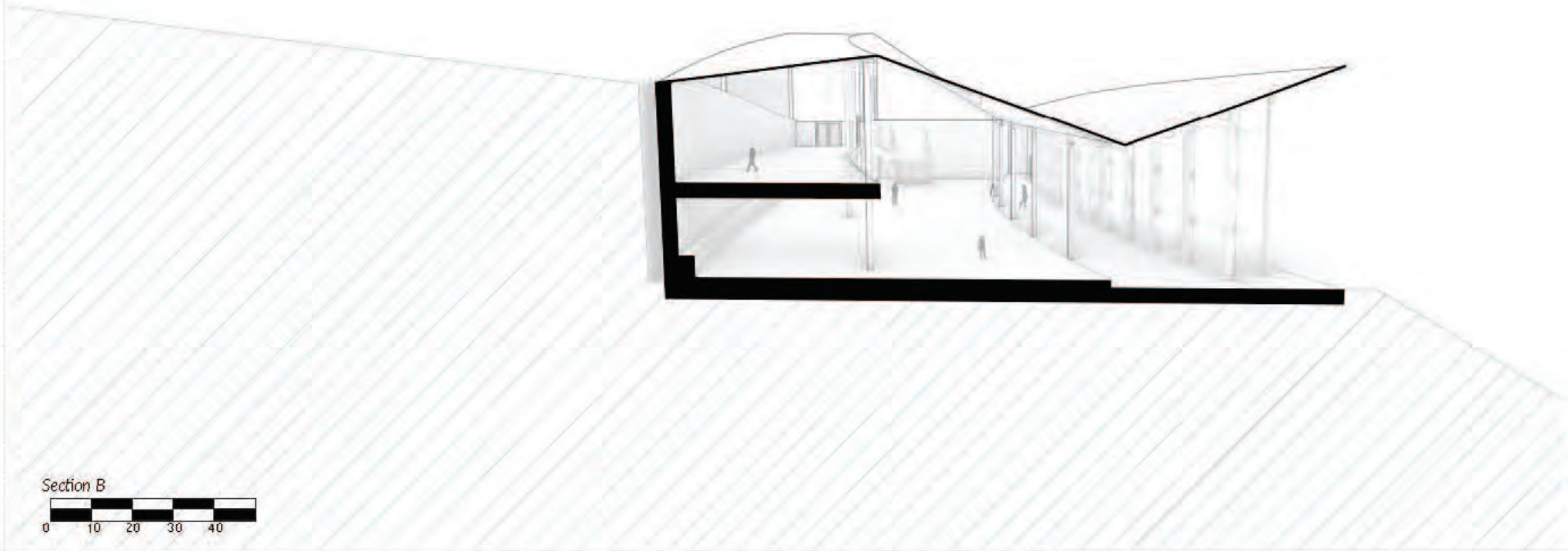
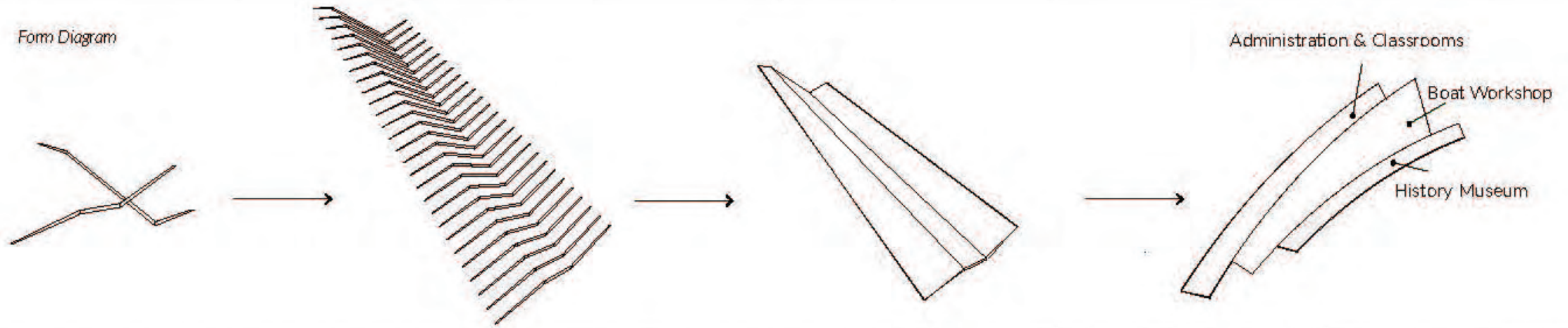




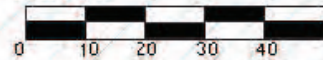




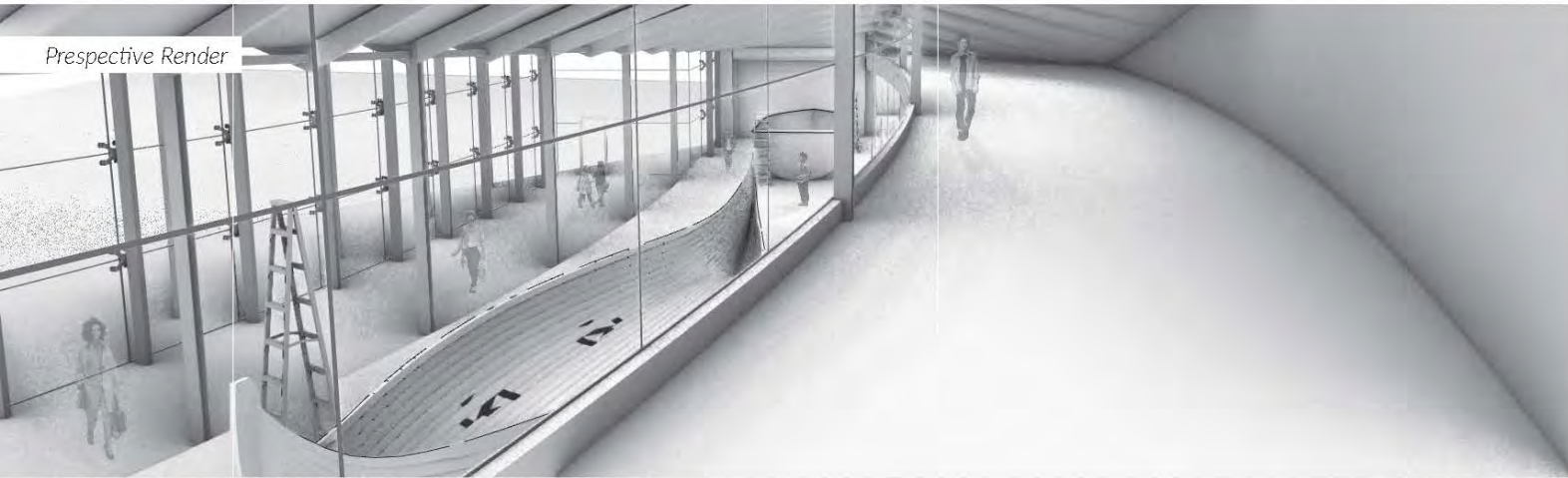
Form Diagram



Section B



Perspective Render



**Morpheus** is a land forming building that progressively rises up with the slope of the land behind it. The bends and dips of the building form, help facilitate the programmatic elements happening on the interior. This allows for the best use of the space - with the administration and classrooms to the back; the Boat Workshop in the center; and the History Museum in the front, closest to the water.

Perspective Render



UNC Charlotte  
Sierra Grant: 3rd Year  
Advisor: Peter Wong  
(Associate Professor at the School of Architecture)

Perspective Render



*"Voyage upon life's sea. To yourself be true.  
And, whatever your lot may be, paddle your own canoe."  
Sarah Bolton*