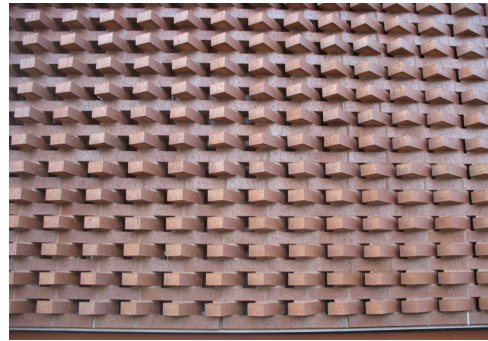


ARCH 4050 | 6306
The Structure of the Everyday
FALL 2023



Instructor: David J. Thaddeus, AIA, Professor
Office #247, (704) 687- 0130
Thaddeus@uncc.edu
Office Hours: By Appointment.

Schedule Course meets on Tuesdays from 2:30-5:00 PM (Room TBD)
Most meetings will be off-campus and will be announced as the semester progresses.

Details are the strange and interesting remarks we make in our work. Steven Holl

Course Abstract To understand the sublime in architecture, students must learn first to appreciate the structure of the everyday and the architecture that mandates it. Through site visits and hands-on demonstrations, this course will explore the construction techniques and methods of assembly of a variety of structural systems and materials.

Methodology: Through a combination of lectures, site, manufacturing plant visits, and office visits, this course aims to broaden the students' understanding of construction and its implications on architectural design. A required course journal will document in-class discussions, readings and on-site observations. Site visits will be documented with captioned photographs and labeled detail and wall sections. Students will be asked to research structural systems that correspond to specific site visits (pre-stressed, post-tensioned, tiltup concrete, masonry cavity construction, glulam construction, steel truss, joists, etc...). This course aims to balance in-class learning with on-site learning in a meaningful and productive fashion.

Skills and Outcomes Students in this course will develop an understanding of everyday construction and its limitations through discussions, hands-on site and plant visits. They will acquire a better understanding of the practical side of architecture and the limitations imposed by project coordination, schedule and budget. In addition, the relationships between the architect on a project and the consultants and contractors will be highlighted.

Requirements This course is only for students who have completed TWO courses in structures. Students who do not have this requirement will be dropped automatically.

Evaluation: The following are the preliminary values for student evaluation and progress,

- | | |
|---|------|
| ▪ Attendance. Class participation, questions and discussion | 70% |
| ▪ Critical Essay on field visits, wall sections and other assignments | 20 % |
| ▪ Semester Journal compilation | 10 % |

Readings:

- *Details, Technology, And Form.* Killory, Christine (Edt)/ Davids, Rene (Edt). Princeton Architectural Press. 2012
- *Manual Of Section.* Lewis, Paul/ Tsurumaki, Marc/ Lewis, David J. Princeton Architectural Press. 2016
- *Studies In Tectonic Culture: The Poetics Of Construction In Nineteenth And Twentieth Century Architecture.* Frampton, Kenneth. MIT Press. 1995
- *The Architecture Of The Well Tempered Environment.* Banham, Reyner University of Chicago Press. 1984